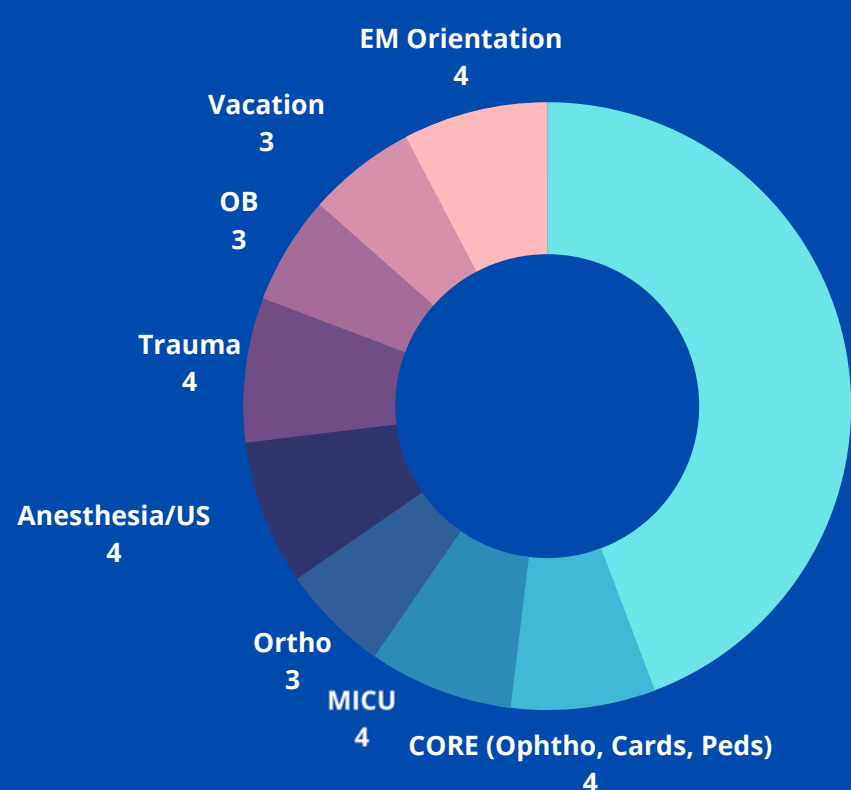




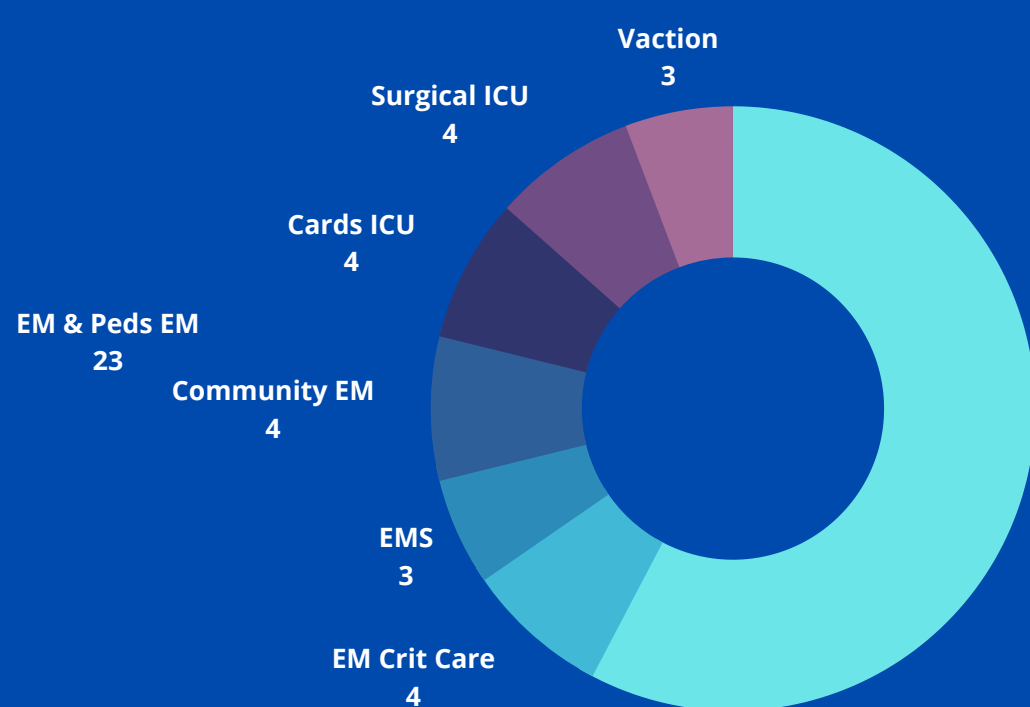
UF EMERGENCY

MEDICINE RESIDENCY

[HTTPS://EMERGENCY.MED.UFL.EDU/EDUCATION/RESIDENCY/](https://EMERGENCY.MED.UFL.EDU/EDUCATION/RESIDENCY/)

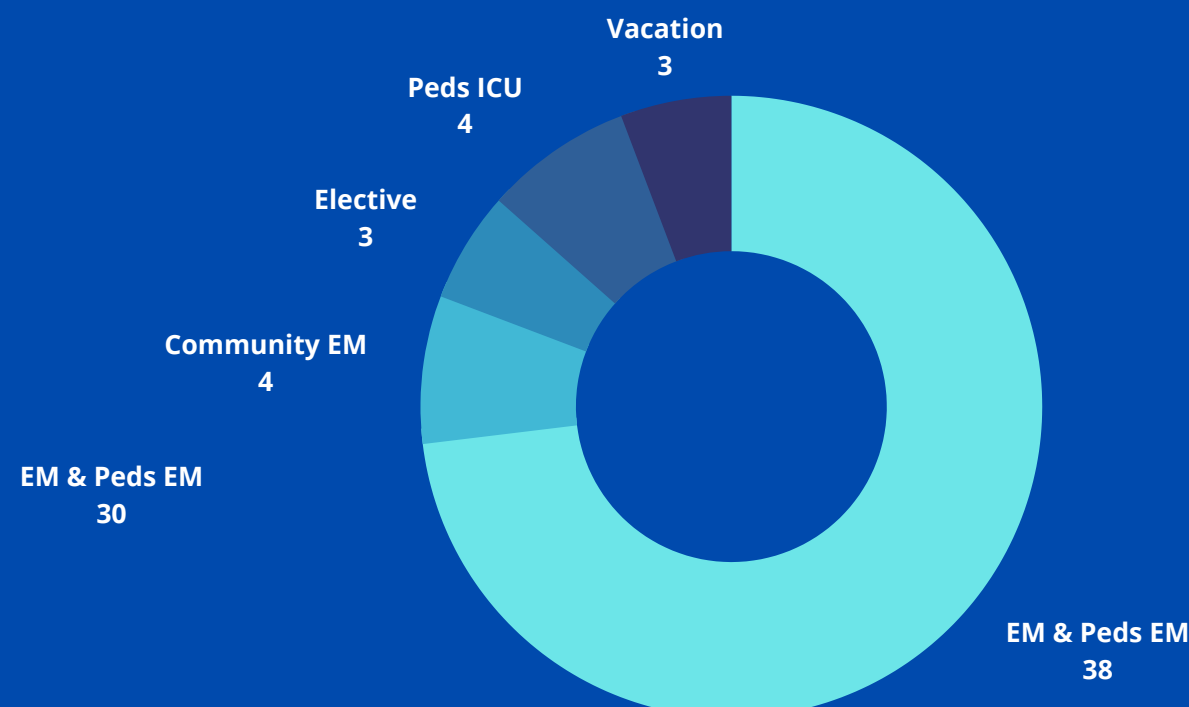


PGY 1



* # of Weeks

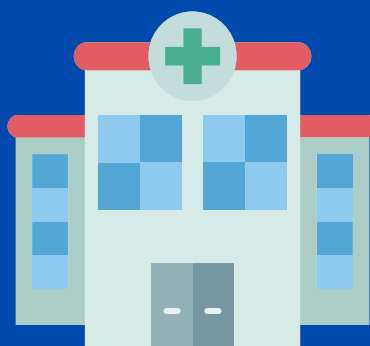
PGY 2



PGY 3

Where do we work:

UF Shands Main ED
UF Shands Peds ED
Kanapaha Community ED



Volume: 138,000 visits/ year
Level 1 Trauma Center
Burn Center
Comprehensive Stroke Center
Accredited Chest Pain Center

How much do we work:

PGY 1: 20 shifts
PGY 2: 19 shifts
PGY 3: 18 shifts



Weekdays: 8 hours
Weekends: 12 hours
Peds ED: 10 hours (longitudinal)
Goal for 2 weekends off/EM block!

Fellowships:

Admin, Crit Care, EMS, Global Health, US, Pediatric, Sim, Sports Med, Neuro Crit Care
40% Go on to Fellowship!



Mentorship Programs:

Faculty- Resident
Senior Resident- Intern System
Nursing Mentor

Benefits:

Health Insurance (Included)
\$1000 Food Stipend
\$1000 Education Stipend
Scrubs, Jacket, & White Coat
ACEP, EMRA, SAEM Membership
Rosh Review
Peer IX Review
And many more!



Wellness:

Protected time after conference
Macro: Resident retreat, St. Augustine, Ginnie Springs, UF Events, Women in EM, Axe throwing
Micro: Game Nights, Trails, Beach Days, Post shift Meals, Breweries

Diversity:

14 Residents/Class
Residents/faculty profiles online
UF EM DEI committee participation



Recent Improvements:

Goodbye call schedule!
Protected Night-Before Conference for PGY1s
Interactive Didactics
Rebuilt CORE rotation



Resident-Run Committees:

Wellness, Social media, Med Student Liaison, Interview Prep, EMRA Liaison

